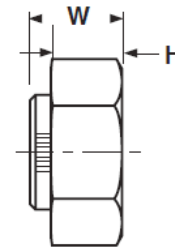
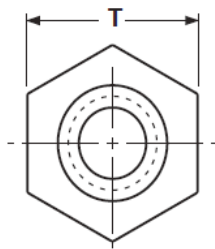


GRADE C AUTOMATION STYLE LOCK NUTS						RB&W Corp.
Nominal Size in Inches	T			W		B
	Width Across Flats			Overall Thickness		Hex Height
	Nom	Max	Min	Max	Min	Min
1/4	7/16	0.4385	0.428	0.226	0.212	0.145
5/16	1/2	0.5020	0.489	0.273	0.258	0.166
3/8	9/16	0.5645	0.551	0.337	0.320	0.198
7/16	11/16	0.6895	0.675	0.385	0.365	0.223
1/2	3/4	0.7520	0.736	0.448	0.427	0.262
9/16	7/8	0.8770	0.861	0.496	0.473	0.286
5/8	15/16	0.9395	0.922	0.559	0.535	0.329
3/4	1-1/8	1.1270	1.088	0.665	0.617	0.382
7/8	1-5/16	1.3145	1.2690	0.776	0.724	0.450
1	1-1/2	1.5020	1.4500	0.887	0.831	0.513



GRADE C HEX COLLAR LOCK NUTS						RB&W Corp.
Nominal Size in Inches	T		W		H	
	Width Across Flats		Overall Thickness		Hex Height	
	Max	Min	Max	Min	Max	Min
1-1/8	1.688	1.631	0.999	0.939	0.657	0.636
1-1/4	1.875	1.812	1.094	1.030	0.719	0.698
1-3/8	2.062	1.994	1.206	1.138	0.793	0.771
1-1/2	2.250	2.175	1.317	1.245	0.865	0.843
1-3/4	2.625	2.538	1.540	1.460	1.012	0.989
2	3.000	2.900	1.763	1.675	1.158	1.134

*Product standards require all grade-marked nuts 1/4" diameter and larger to have a raised or depressed insignia identifying its manufacturer.
 "X" represents one location such a marking may appear.